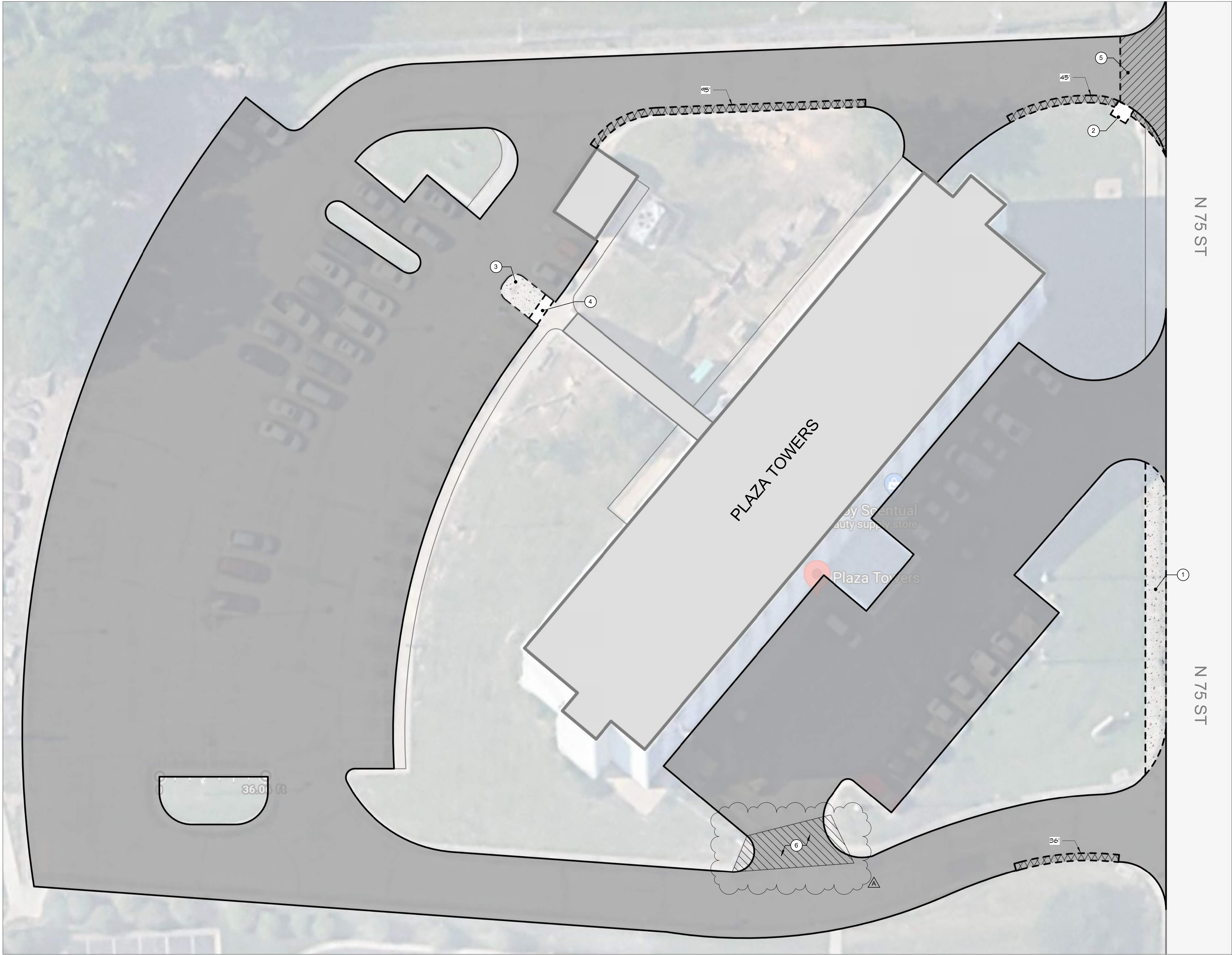


12/4/2023 1:59:29 PM C:\Users\Todd\Documents\22.39_KCKHA Parking_22_veri-tredder.rvt



N 75 ST

N 75 ST

PLAZA TOWERS

by Scenatural
auty supply store

Plaza Towers

1 PARKING LOT REPAIR PLAN - PLAZA TOWERS


1/16" = 1'-0"

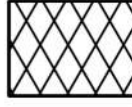



GENERAL REPAIR NOTES

1. ALL PARKING LOT CURBS & ADJOINING SIDEWALKS TO BE LIKE NEW - PATCH & REPAIR AS REQUIRED WHERE NOT INDICATED.
2. SEE SHEET G01 FOR SPECIFICATIONS ON SEALCOAT TYPE AND APPLICATION REQUIREMENTS.

LEGEND

- 

MILL & OVERLAY:
REMOVE EXISTING AGGREGATE BASE / AGGREGATE CONCRETE AND REPLACE WITH NEW AGGREGATE BASE / AGGREGATE CONCRETE, REF. "TYPICAL PARKING LOT PAVEMENT REPAIR SECTION".
- 

CURB REPAIR:
REMOVE & REPLACE EXISTING CONCRETE CURB. REFERENCE CURB DETAILS.
- 

PAVEMENT REPAIR:
REMOVE & REPLACE PORTION OF EXISTING SIDEWALK / PAVEMENT. REFERENCE SIDEWALK DETAILS.

PARKING LOT REPAIR QUANTITIES

MILL & OVERLAY	58,057 SF
CURB REPAIR	176 LF
FLATWORK	753 SF

PARKING LOT REPAIR PLAN NOTES - PLAZA

- 1 DEMO SIDEWALK & ADJOINING CURB; CONSTRUCT NEW SIDEWALK & CURB, REF. SIDEWALK DETAILS
- 2 DEMO CURB & STORM CURB-OPENING INLET; CONSTRUCT NEW CURB & STORM CURB-OPENING INLET
- 3 DEMO RAMP/WALKWAY COMPLETE; PREP FOR OVERLAY & STRIPING
- 4 CONSTRUCT NEW ADA RAMP
- 5 DEMO EXISTING DRIVE APPROACH & CONSTRUCT NEW DRIVE APPROACH TO MATCH EXISTING.
- 6 EXISTING AREA OF PONDING. REGRADE AND/OR PROVIDE DRAINAGE SOLUTION AS REQ.

A



707 n. 6th street
kansas city, ks 66101
www.veritas-ad.com
913.624.1610

consulting engineer:

KCKHA PARKING IMPROVEMENTS

PLAZA TOWERS

1200 N 75TH PL KANSAS CITY, KS 66112

REVISIONS

No.	Description	Date
A	Addenda	11/29/23

sheet issue date:
11/17/23

project no.:
22.39

sheet contents:
PARKING LOT REPAIR
PLAN

sheet no.:

P00